

## 100-Watt Tungsten Halogen Light Source

The Model 618 Tungsten-Halogen Light Source produces an intense continuum from below 380nm and extending into the near infrared region of the spectrum. It uses a pair of plano-convex lenses to focus the filament at the entrance slit. This compact, forced air cooled source is capable of operating at apertures as fast as f/2 (when ordered with a monochromator, f/no matching apertures or lenses are included.)



The Model 618 light source system is provided with the stable DC power supply Model 718. The 718 delivers superb stability and < 0.1% ripple at full power operation. Complete systems include power supply, cables, housing and lamp, ready for operation.

The Model 618 mounts directly on the 5" diameter entrance slit of any McPherson spectrometer and may be adapted to other spectrometers. It is useful for VIS-NIR spectroscopy and for optical or experimental systems as fast as f/2 in a range of applications including Absorption, Transmission and Reflectance.

### 380nm to NIR output | f/2 condenser | Forced air cooling | Fits to McPherson 5" Slits

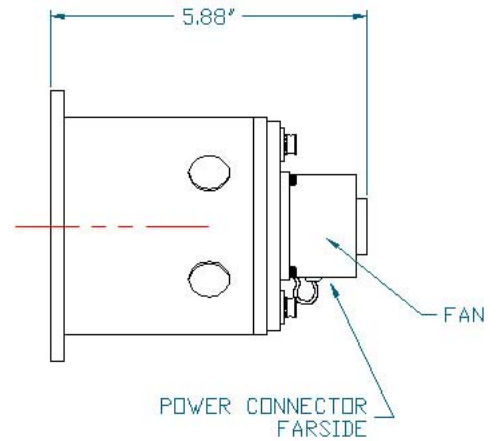
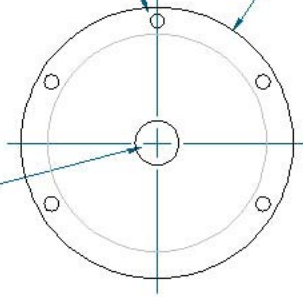
Source	Tungsten-Halogen T4, GY6.35 base
Wattage	100
Color Temperature	3000K
Source Emission	Line free continuum
Image Size	approx 2.3mm x 4.2mm high
Divergence of Beam	f/2 and slower
Power Supply	Model 718 DC supply
Intensity Control	With power supply
Rated Lamp Life	2000 hours
Replacement Lamp	412-334-1
Size	5" dia x 6" long
Weight	5 lbs

MODEL 618 TUNGSTEN  
100 WATT DC LIGHT SOURCE  
PART 8100-2318-0

0.28" DIA THRU FOR 1/4-20 THD  
5 PLACES, ON 4.5" BOLT CIRCLE.  
FITS McPHERSON 5" DIA SLITS

5" DIA

LIGHT OUTPUT  
0.8" DIA



## Ordering Information

Part Number 8100-2318-0 = Model 618 100W Tungsten Halogen Light Source w DC Supply

Part Number 412-334-1 = Replacement 100W Tungsten Lamp (T4, GY6.35 base)