

Strut Mounting System

The strut based mounting system minimizes vibration and allows easy position adjustment for a wide variety of hardware. It can be adapted for work inside high vacuum or ultra-high vacuum (UHV) systems. The six struts provide very solid (seismically adequate) support. When sub-millimeter alignment is required this system is a proven mounting method.

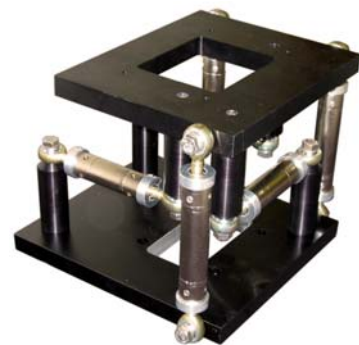
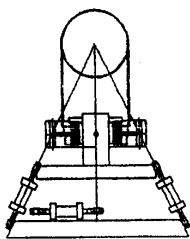
The strut system can rigidly support instruments and fixtures with precise adjustability in ultra high vacuum. Adding edge welded bellows sections and metal seal flanges provide convenient adaptation into chambers, tubes or crosses. Precise and accessible external strut adjustments provide respectable and practical alignment. These adjustments are possible while systems are under vacuum. We will be happy to work with you to determine the right configuration.



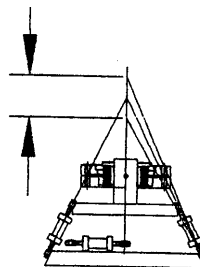
Standard strut sizes are available and with a variety of options for customization. Options include indicator dials, metric thread, invar, differential threads, additional length, and additional travel



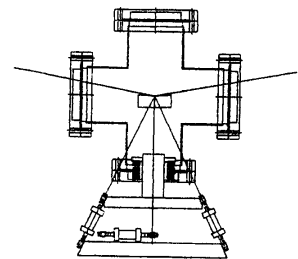
Independent Pitch, Yaw, and Roll



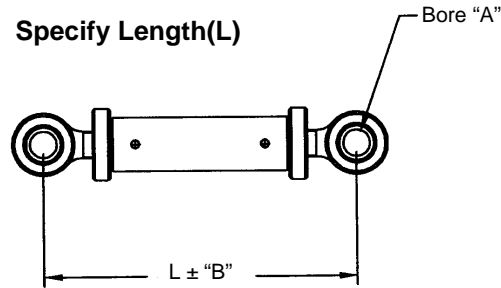
Center of Rotation is Adjustable



Mounts in a Conflat Cross or "T"



Strut Assemblies *(Strut bodies supplied with nickel plated finish. Other finishes on request.)*



Part No. (with scale)	181-100333-L	181-100334-L	181-100335-L	181-100336-L
Part No. (without scale)	181-100317-L	181-100318-L	181-100319-L	181-100320-L
Bore (A)	1/4 in (6.35 mm)	3/8 in (9.53 mm)	1/2 in (12.70 mm)	3/4 in (19.05 mm)
Adjust Range (B)	±.39 in (10.0 mm)	±.44 in (11.2 mm)	±.44 in (11.2 mm)	±.44 in (11.2 mm)
Min. Length (L)	3.25 in (83.0 mm)	4.75 in (121.0 mm)	5.75 in (146.0 mm)	6.10 in (168.0 mm)
Max. Length (L)	20.00 in (508.0 mm)	25.00 in (635.0 mm)	30.00 in (762.0 mm)	40.00 in (1016 mm)
Thread	1/4-28 in	3/8-24 in	1/2-20 in	3/4-16 in
Capacity	1000 lbs 500 kg	2000 lbs 1000 kg	3000 lbs 1500 kg	6000 lbs 3000 kg

Standard strut sizes are available and with a variety of options for customization.

Options include indicator dials, metric thread, invar, differential threads, additional length, and additional travel

Call today to discuss your application.

We will be happy to work with you to determine the right configuration.